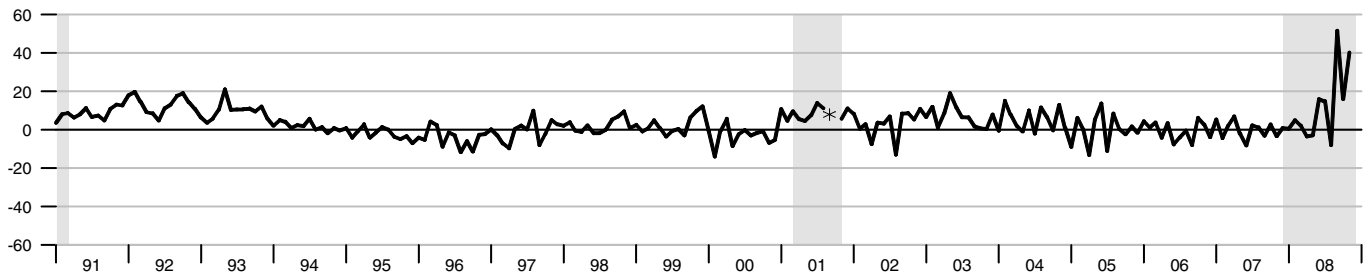


M1

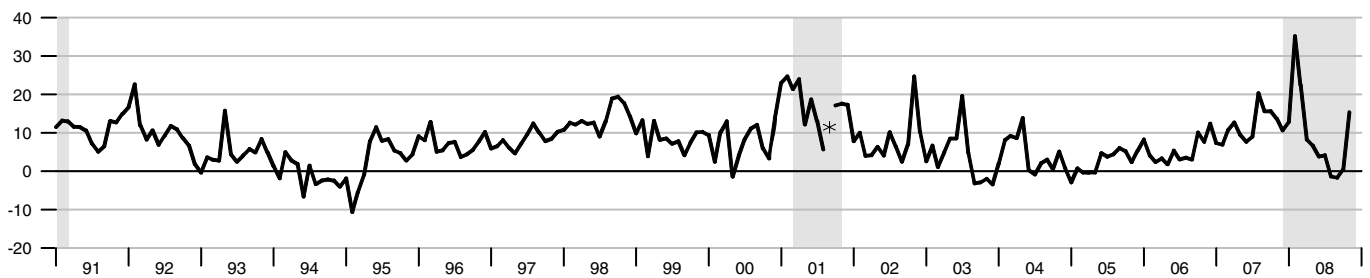
Percent change at an annual rate



*Actual values for September and October 2001 are 55.87 and -38.35 percent rate, respectively.

MZM

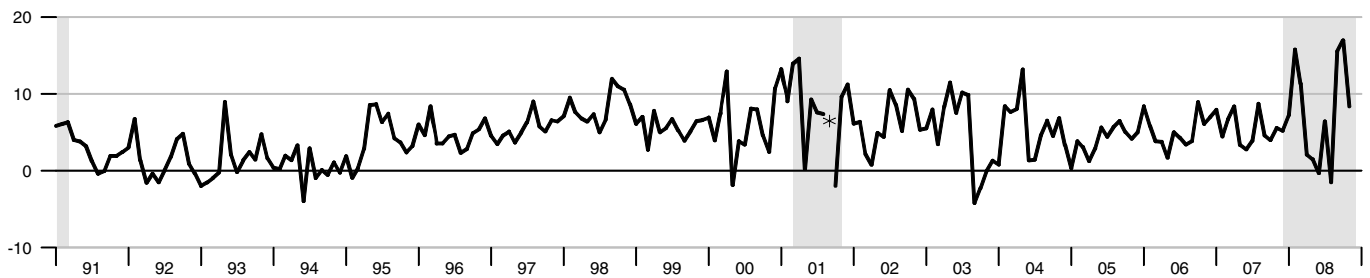
Percent change at an annual rate



*Actual value for September 2001 is 39.41 percent rate.

M2

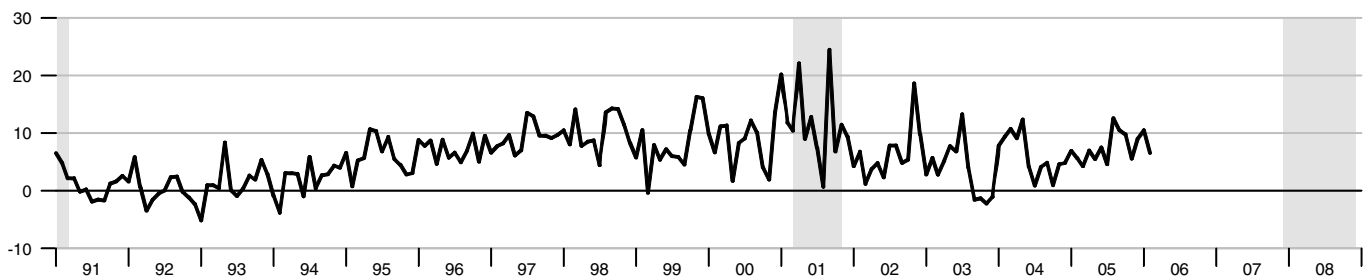
Percent change at an annual rate



*Actual value for September 2001 is 24.90 percent rate.

M3*

Percent change at an annual rate



*See table of contents for changes to the series.